



**ALKA FORGINGS**  
An ISO 9001 Certified Unit

C-20, Bulandshahar Road, Industrial Area, Ghaziabad, New RTO Office  
Phone : 0120-4117682 (20 Lines), 2703970  
Mobile : 9212552821, 9999516026  
E-mail : info@alkaforgings.com  
ravi@alkaforgings.com

Website: [www.alkaforgings.com](http://www.alkaforgings.com)

**ALKA**  
FORGINGS

AN ISO 9001 CERTIFIED UNIT



WELL KNOWN  
FORGE MASTER BY

**I B R**

MANUFACTURER'S OF  
HEAVY STEEL FORGING  
IN CARBON, LOW & HIGH ALLOYS,  
STAINLESS & SPECIAL STEEL

CAG ADVERTISING - 98106 12122, 9871197277



## MESSAGE FROM THE MANAGING PARTNER

However vehement the situation turns out to be what keeps a tenacious mind going and growing is preparedness, sense of forthrightness and strategic planning.

These three when blends together directs us towards the process of magnification taking the operational quality to a whole next level. We, at Alka forgings bid to be one of the most

competitive companies in the business accenting efficiency in the operations, trustworthiness for our customers and thrust on over all working.

We are a blend of combinations like strong management team work and more stronger team management with our professional and persistent workforce lead by a clear vision to establish a medium, a platform that provide unique specialized services to the various vital business sectors. This being our paramount concern. The key to our success can briefly be summarized with our absolute, resolute efforts to create a magnum opus in each of our job. Our company's sights are on the future, but we are diligently aware of their customers' needs in the present.





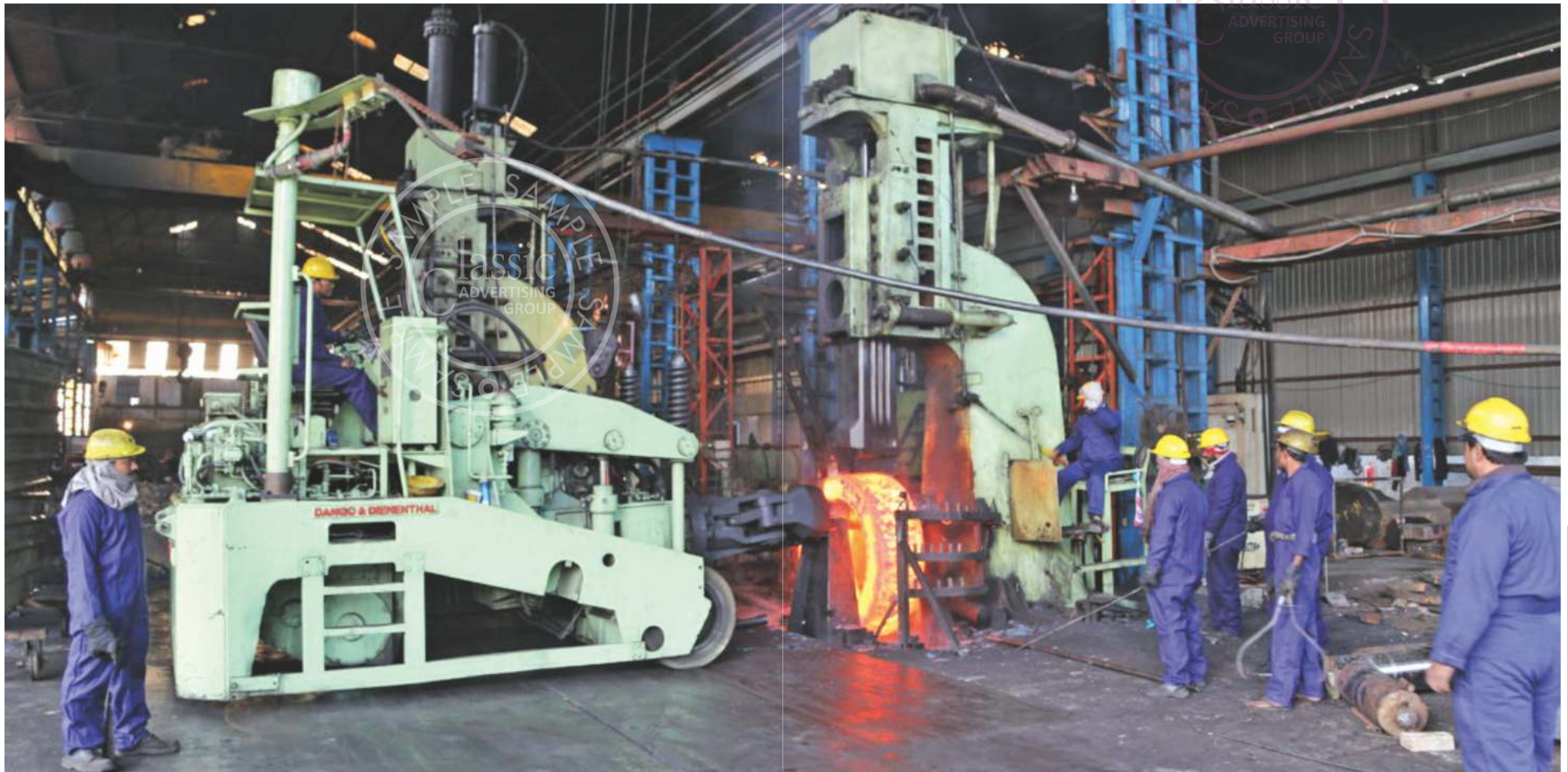
## OUR VISION

We aim to provide our customers with aesthetics, flexibility and working in the most transparent form possible. We believe in working and contributing the best of our ability, at the same time. Contribution not just towards the society in terms of employment of skilled and unskilled labor but also for the environment too, by using environmental friendly machines.



## OUR MISSION

We at Alka Forgings aspire to provide our customers the best of both worlds, as in we aim to achieve total customer satisfaction not just by supplying the highest quality forgings but also at the earliest appropriate time possible. We believe in being the vendor of choice to our customers.





## FORGING FACILITIES



## MATERIAL HANDLING

### ELECTRO HYDRAULIC HAMMER

OPEN FORGING  
4 TONNS CAPACITY

NO.  
1

### ELECTRO HYDRAULIC HAMMER

OPEN DIE FORGING  
3 TONNS CAPACITY

NO.  
1

### ELECTRO HYDRAULIC HAMMER

MANDRELL RING ROLLING  
3 TONNS CAPACITY

NO.  
1

## MANIPULATORS

MAKE	CAPACITY	NOS.
DANGO & DIENENTHAL	08 MT	01
DANGO & DIENENTHAL	06 MT	01
DANGO & DIENENTHAL	03 MT	01
DANGO & DIENENTHAL	02 MT	01

## OVER HEAD CRANES

CAPACITY	NOS.
25 MT	02 Nos.
20 MT	02 Nos.
15 MT	01 Nos.
10 MT	02 Nos.
05 MT	01 Nos.







## OVENS

1	2000mm (W) x 1200mm (H) x 2000mm (L) (Oil/Gas fired) - Single Gate - 18 MT Capacity
2	2000mm (W) x 1200mm (H) x 2200mm (L) (Oil/Gas fired) - Double Gate - 20 MT Capacity

## HEAT TREATMENT FACILITIES:

- Annealing • ISO Thermal Annealing • Normalizing • Stress Relieving
- Quenching & Tempering • Solution Annealing

Furnace	Capacity	Qty.
Oil/Gas Fired	5000mm (L) x 2.5 mtr (W) x 1.5 mtr (H)	01
Oil/Gas Fired	2200mm (L) x 1200mm (W) x 1000mm (H)	01
Electric Fired	3000mm (L) x 1500mm (W) x 1000mm (H)	01

Each with 6 point recorders (Boogie Type)

Quenching Tank with Agitation

7000 mm (L) x 3mtr (W) x 5000mm (H) - 01 (Water)

2000 mm (L) x 2000mm (W) x 5000mm (H) - 01 (Oil)





## TESTING FACILITIES

### DESTRUCTIVE AND NON DESTRUCTIVE TESTING FACILITIES

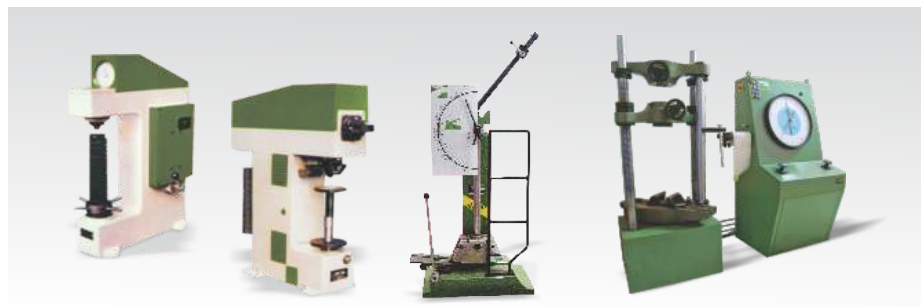
- Universal Testing Machine 20 Tons [Mfg. by: FIE] 1 No.
- Ultrasonic Flaw Detector - Vibronics FD 301 1 No.
- Ultrasonic Flaw Detector - E.E.C. 1 No.
- Impact Testing Machine [Charpy and IZOD] Make: FIE 1 No.
- Brinell Hardness Testing Machine 3000 kgs. Make: FIE 1 No.
- Magnetic Particle Testing Machine- [Magnaflux-YOKE] 1 No.
- Notch Making Equipment with Profile Projector 1 No.
- Poldi Hardness Tester 1 No.
- Pin Brino Hardness Tester 1 No.
- Die Penetrat Check [Magnaflux] 1 No.
- Wet Process Chemical Lab to Determine Carbon and Alloy Steel. 1 No.

### CHEMICAL TESTING FACILITIES (WET ANALYSIS)

- Carbon & Sulphur Appratus (Strolin Appratus) Make : Indian
- Volumetric and Gravimetric Analysis For Make : Indian Other Elements
- Muffle Furnace and Other Instruments. Make : Indian

### OTHER FACILITIES

- Microscope 01. No. (Indian)
- Polishing Machine 01. No. (Indian)
- Sulphur Print 01. No. (Indian)
- Etching Tanks 01. No. (Indian)



## MACHINE SHOP



SR. NO.	MACHINE	QTY	SIZE (CAPACITY)	MAKE
1	LATHE	01	DIA 620X3000 LONG	AMERICAN PACEMAKER
2	LATHE	01	DIA 350 X 2000 LONG	TOS TRENCIN
3	LATHE	02	DIA 320 X 1000 LONG	STANKOIMPORT MOSCOW
4	MILLING	01	BED (450 X 2450) LONG	ROUCHOUD
5	BORING	01	BED (915 X 1900)	SELLERS
6	CNC VTL	01	DIA 1200 X 1500 HEIGHT	TST TOS HULIN
7	VTL	01	DIA 1800 X 1000 HEIGHT	WB
8	VTL	01	DIA 1500 X 700 HEIGHT	WB
9	VTL	04	DIA 900 X 450 HEIGHT	WB
10	LATHE	01	DIA 450 X 3000 LONG	CROWFORD SWIFT
11	LATHE	01	DIA 1200 X 3000 LONG	BATALA
12	LATHE	01	DIA 250 X 2000 LONG	MYSORE KIRLOSKAR
13	LATHE	01	DIA 500 X 5000 LONG	MORANDO
14	LATHE	02	DIA 300 X 1000 LONG	TEZSAN
15	CNC TURNING-1	01	DIA 250 X 1450 LONG	HEYLIGENSTAEDT
16	CNC TURNING-2	01	DIA 400 X 700 LONG	CHURCHILL
17	BORING-1	01	1700 X 1500 X 1200	UNION
18	DRILLING	02	3" DRILL SIZE	HMT
19	VTL-1	01	DIA 1200 X 600 HEIGHT	WB
20	VTL-2	01	DIA 1220 X 600 HEIGHT	WB
21	LATHE-1	01	DIA 1200 X 7500 LONG	WB
22	LATHE-2	01	DIA 1000 X 5000 LONG	BATALA
23	LATHE-3	01	DIA 600 X 4000 LONG	BATALA
24	BAND SAW MACHINE	01	1200mm x 1200mm	ITL
25	BAND SAW MACHINE	01	1000mm x 1000mm	ITL
26	BAND SAW MACHINE	01	800mm x 800mm	ITL
27	BAND SAW MACHINE	01	2000mm x 2000mm	SHIP MACHINE TOOL
28	BAND SAW MACHINE	01	550mm x 550mm	SHIP MACHINE TOOL
29	BAND SAW MACHINE	02	350mm x 350mm	SHIP MACHINE TOOL

LATHE Horizontal Turret Lathe  
VTL Vertical Turret Lathe



## OUR PRODUCTS



Compressor's Cross Heads



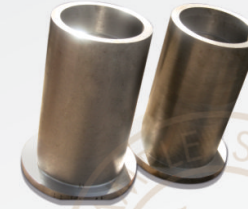
Bull Gears



Pinion Shafts



Lower &amp; Upper Housings



Tube Ring - I, II



U Clamp



Camshaft Gears



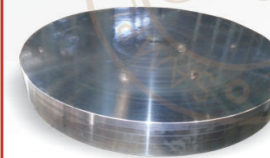
Hydraulic Couplings



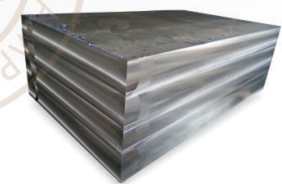
Stuffing Box



Eccentric Shaft



Blind



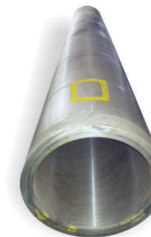
Block (6 Tonnes)



Gear's Couplings



Hollow Cylinder



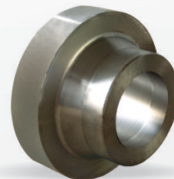
Hollow Pipe ( 5 Mtrs)



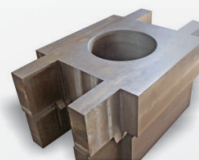
Turbine Shaft



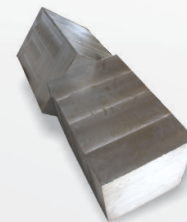
Segment forgings


Hydro Turbine  
Rotor Shafts


Longneck Flange



Crosshead



Stepped Pipes



Pre Load Stud



Shaft



## PRODUCT RANGE



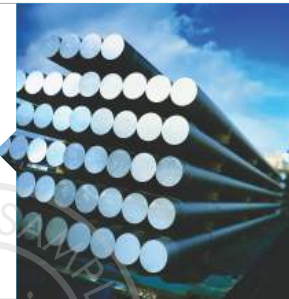
### FORGED FLANGES

Item	Size and Pressure	Dimension Standards: ANSI B 16.5, B 16.1, B 16.47 Series 'A' and 'B', MSS SP-44, JIS5K, 10K, 16K, EN/DIN, BS 4504 or any other as per customer's requirements.
Slip On, Weld Neck, Blind, Socket Weld, Screwed, Lap Joint, Reducing Type, Orifice Flanges Complete with Taping, without JACK SCREWS.	1/2" - 60" 150 Pressure	
	1/2" - 60" 300 Pressure	
	1/2" - 60" 400 Pressure	
	1/2" - 60" 600 Pressure	
	1/2" - 48" 900 Pressure	
	1/2" - 24" 1500 Pressure	
	1/2" - 24" 2500 Pressure	

**Material Grades:** ASTM A-105, ASTM A-350 LF-1, LF-2, LF-3, A182 F-304/ F-304H/ F-304L/ F-316L/ F-321/ F-347/ F-316Ti, A181 F-1/ F-5/ F-11/ F-22, A-694, F-52, 60, 65 or any other international standard in Carbon/ Alloy/ Stainless Steel.

### FORGED ROUNDS

Max Dia	50 mm to 700 mm
Weight	50 Kg to 10000 Kg
Material	Carbon, Alloy & Stainless Steel
Length	Upto 11000 mm



### NON STANDARD FORGINGS



ITEM	Self Reinforced Nozzles	Rings, Wheels, Tyre	Tube Sheets	Blocks
Size Range	As Per Clients Drawing	Up to Dia 2200 mm	Up to Dia 2200 mm	1100x1100 sq.
Weight Range	Up to 5000 Kgs. Max.	Up to 6000 Kgs. Forge Wt.	Up to 6000 Kgs. Forge Wt.	Up to 6000 Kgs.

Dimension Standards: As per Customer Requirements.

### Wind Mill Products

Item	Wind Mill Gear Box Forgings
Description	Forged Gear Blanks & Shafts
Type	Max dia 2200 mm for rings & 650 mm for shafts with max weight 5500 kgs per piece



## PRODUCTS

### FORGED FLANGE



DEFENCE



AEROSPACE

### FLANGES FOR WIND MILL

### GEAR RINGS GEAR COUPLINGS



NUCLEAR



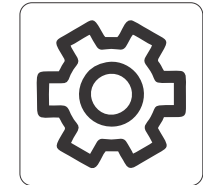
ENGINEERING, PROCUREMENT & CONSTRUCTION

### BLOCK SHAFTS ROUNDS ETC.

### HOLLOW TUBE PIPE TUBE SHEET



OIL & GAS

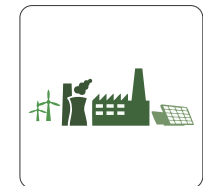


GEAR MANUFACTURING

### CRANE WHEELS PISTON CYLINDER CRANE HOOKS



PRESSURE VESSELS & HEAT EXCHANGERS



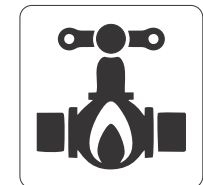
POWER GENERATION

### STEPPED SHAFTS

### DISC BLINDS HUB



MATERIAL HANDLING & EARTH MOVING



VALVES

### CUSTOMIZED FORGING